

# WELCOME

**Highway 23 New London | Access & Safety Assessment**

**Public Open House #1**

May 4, 2017 – 5:00 to 7:00 PM

# OVERVIEW OF ASSESSMENT

## Purpose:

- Identify opportunities to reduce serious and fatal crashes.
- Facilitate discussion between local partners, stakeholders, and the public to seek input on concerns and priorities.
- Develop recommendations and establish priorities for improving safety that balance future development, mobility, and accessibility, in both the near- and long-term.

## Schedule:

- Initial activities for the assessment began in March 2017 and the overall assessment will be completed by November 2017. The assessment will be conducted in three phases:

**Phase 1:** Identify the purpose and need.

**Phase 2:** Develop and evaluate alternatives.

**Phase 3:** Identify recommended strategies and implementation plan.

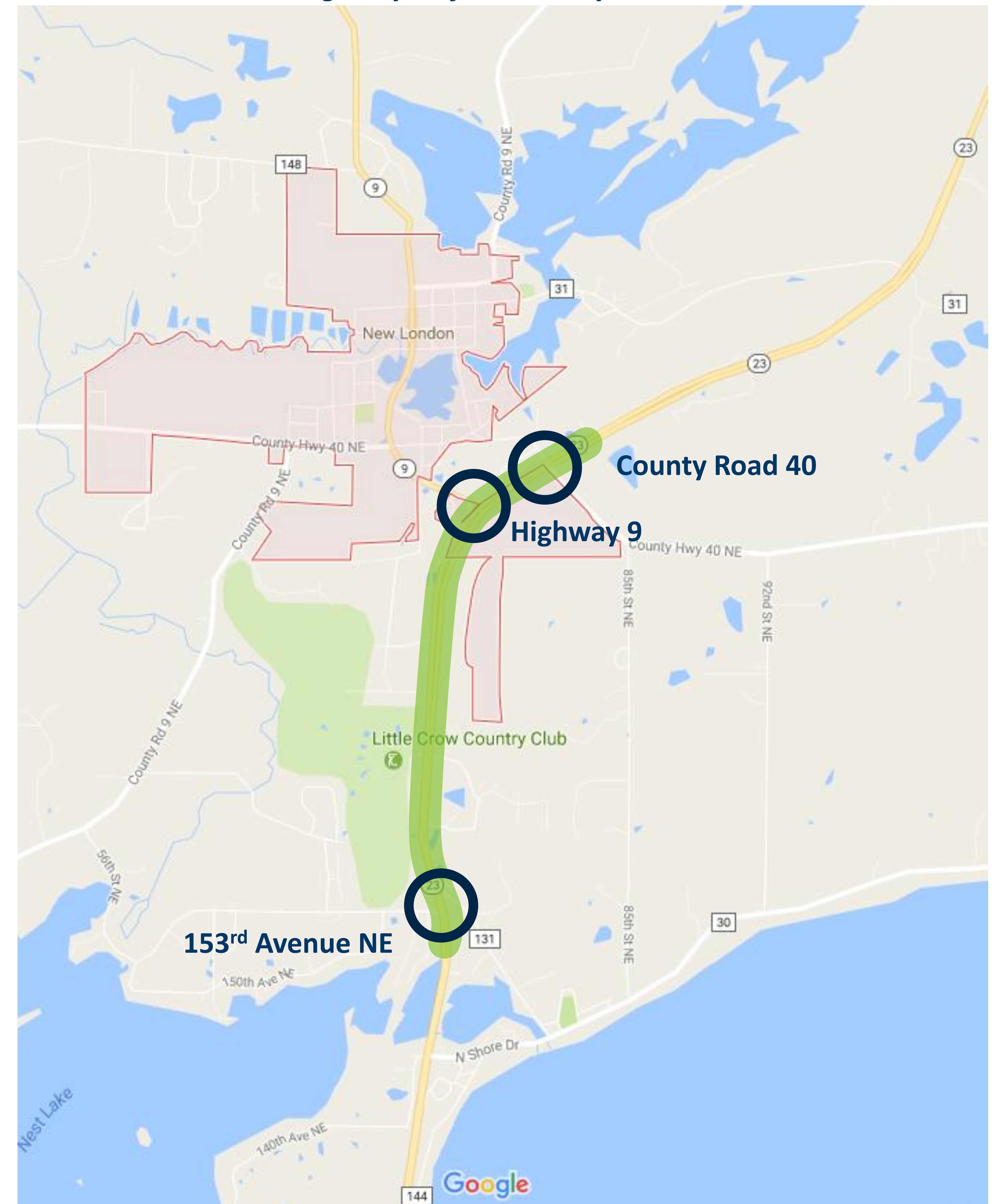
## Partners:



NEW LONDON  
*Minnesota*

New London Township

Assessment Limits – Highway 23 from County Road 40 to 153<sup>rd</sup> Avenue NE



# ABOUT HIGHWAY 23

## New London Community:

- High growth community
- Increased population of ages 65+
- Potential future growth areas immediately adjacent to Highway 23

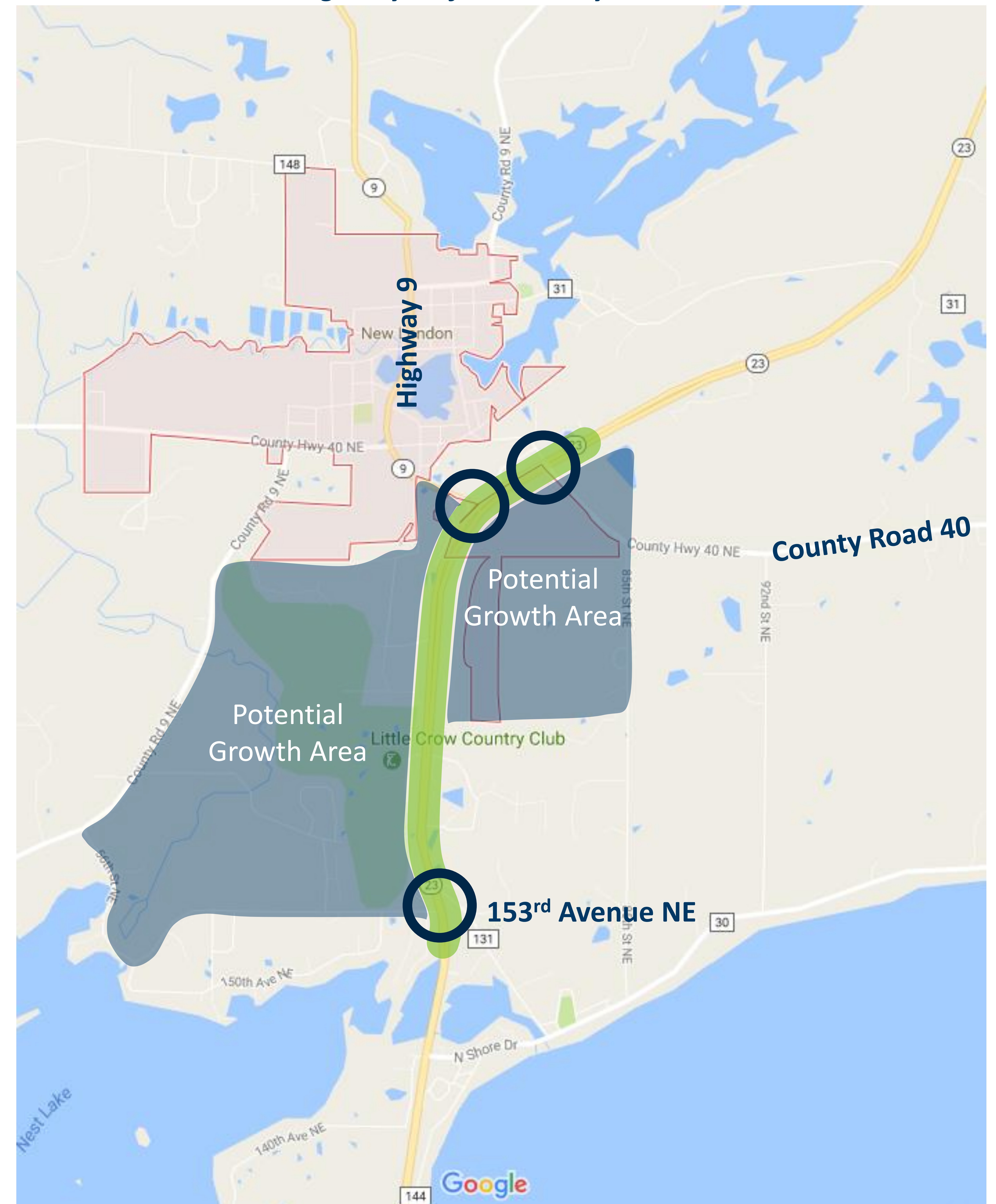
## Assessment Intersections:

- County Road 40
- Highway 9
- 153<sup>rd</sup> Avenue NE

## Prior Improvements Considered:

- Realignment of County Road 40 at Highway 9
- Interchange at Highway 9\*
  - \* Due to funding realities, an interchange at Highway 9 is not feasible.

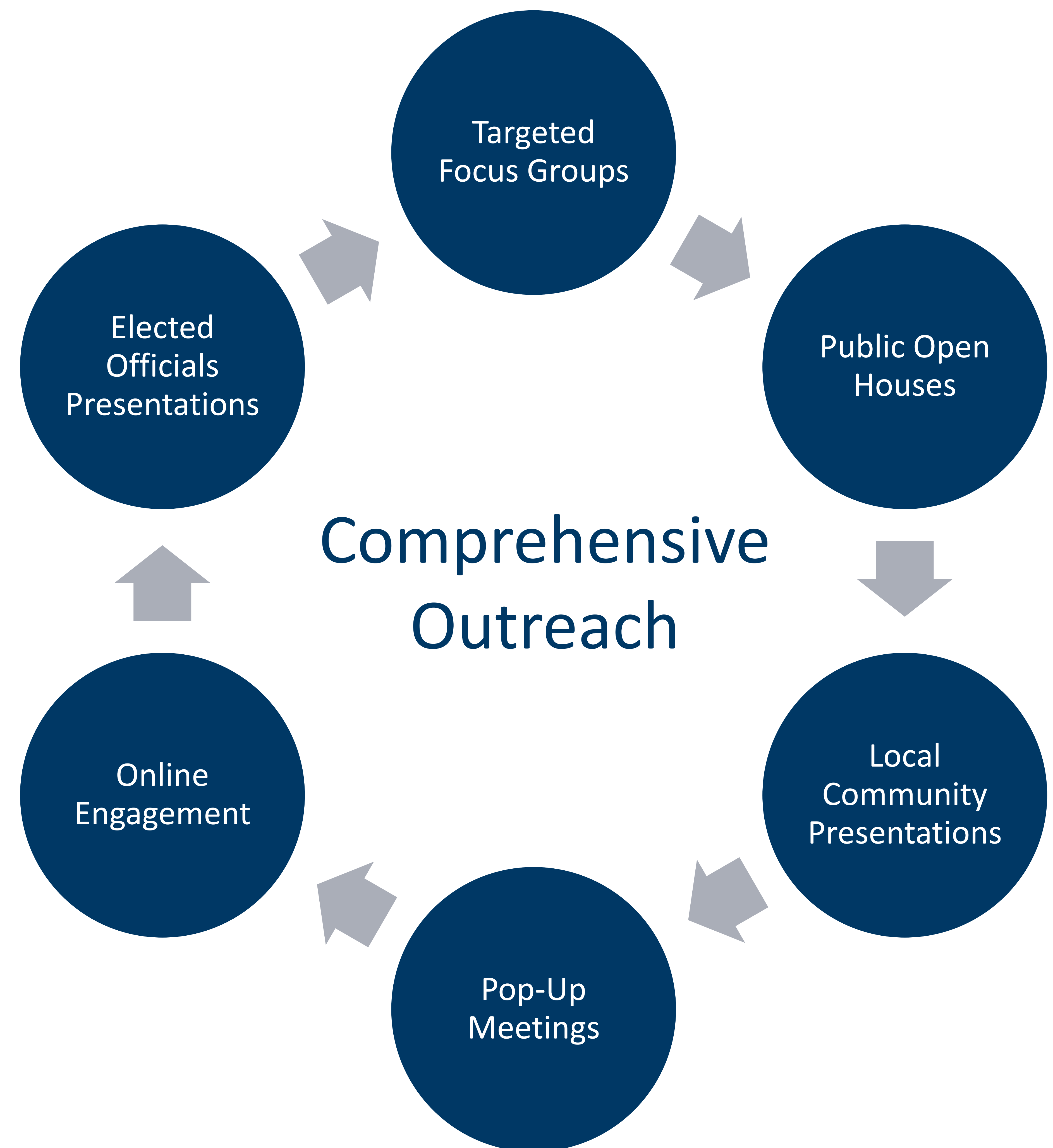
Assessment Limits – Highway 23 from County Road 40 to 153<sup>rd</sup> Avenue NE



# PUBLIC & STAKEHOLDER ENGAGEMENT

## Conducting Proactive and Transparent Outreach:

- Share information broadly.
- Seek input through multiple in-person and online activities.
- Solicit input to further understand perceptions, concerns, and opportunities for improvements.
- Receive meaningful feedback to help shape the recommended improvements.
- Build consensus for a vision for Highway 23.



# ASSESSMENT PROCESS



# PROJECT DEVELOPMENT PROCESS

*We are here!*



Depending on funding, it takes approximately 2 to 5+ years to develop and deliver a project! 

## Potential Funding – Highway Safety Improvement Program (HSIP):

- HSIP is a federal-aid funding program designed to reduce traffic fatalities and serious injuries on all public roads.
- The objective of this program is to identify, implement and evaluate cost effective construction safety projects.j